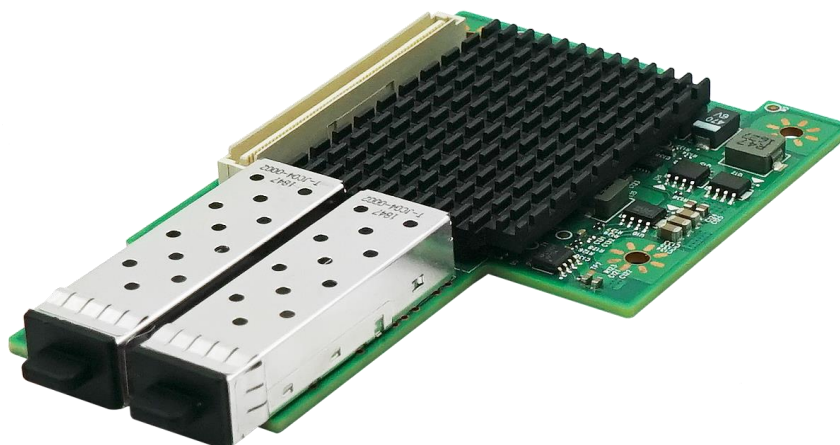


LRES3001PF-OCP

-- OCP Type-1 Dual-Port 10G SFP+ Ethernet Server Adapter (Net-swift SP1000A Based)

Overview



LRES3001PF-OCP is OCP Type-1 10 Gigabit dual port fiber optic Ethernet server adapter card independently developed by Shenzhen Lianrui Electronics Co., Ltd. based on the online chip control scheme of Netswift SP1000A. The card is designed for server-oriented and high-end devices. This server adapter makes it easy to share the more efficient servers and data centers in the general IT industry.

Shenzhen Lianrui Electronics Co., Ltd. launched this Ethernet optical fiber network card (LRES3001PF-OCP) with independent intellectual property rights. This fiber-optic network card has LAN performance acceleration, network security, network convergence, network virtualization, data center bridging, etc. The function of the single port is 10Gbps, the number of logic gates of the main controller reaches 18 million, the on-chip SRAM capacity reaches 25Mbit, and the PCIE 3.0 serial bus host interface is supported.

The controller used in the LRES3001PF-OCP is the Netswift SP1000A, which is self-controllable. There are major innovations in the layered DMA queue architecture, seamless switching of virtual machine hot migration networks and cross-slices, and the overall technology has reached the international advanced level. Indicators including average transmission delay and actual packet transmission rate have reached the highest level disclosed in the industry. And has passed the X86, SW, FT and other platforms for authoritative testing and application, showing excellent performance.

LRES3001PF-OCP is used to adapt to the needs of server, workstation and Internet data centers for network traffic and data offloading, processing and virtualization and big data operations.

Key Features

- Dual SFP+ Connectivity
- OCP Connectivity
- Network Virtualization
- The first China-Made Chip master control solution
- IEEE 802.1q VLAN support with VLAN tag insertion
- Low profile & full-height bracket

Specifications

Controller	Net-swift SP1000A
Baffle Height	*
Fiber Type	10GBase-SR、10GBase-LR、10GBase-ER、 10GBase-ZR、10GBase-LRM、10GBase-Cu
Power Consumption	10.7W
System Support	Windows 7/8.1/10
	Windows Server 2008 R2/2012 R2/2016 R2/2019 R2
	Linux SLES 11/12
	CentOS / RHEL 6.6 ~ 7.4
	Ubuntu 14.04/16.10
Bus Type	OCP Type-1
Data Rate Supported per port	10000MbE
Connector	2*SFP+

Technical Features

Standards Compliant	IEEE 802.3ae 10GBase-X IEEE 802.3z 1000BASE-X Gbit/s Ethernet IEEE 802.3x Full Duplex and flow control IEEE 802.3an IEEE 802.3ap IEEE 802.3aq IEEE 802.3as IEEE 802.3az IEEE 802.3bc IEEE 802.3bd IEEE 802.1p IEEE 802.1Q VLAN IEEE 802.1Qau IEEE 802.1Qbb IEEE 802.1Qbg IEEE 802.1Qbh IEEE 802.1X IEEE 802.1AE IEEE 802.1AEbn IEEE 802.1AX IEEE 802.1Qaz
iSCSI	Yes
WoL	No
Jumbo Frames	Yes
DPDK	Yes
PXE	Yes
FCoE	No
VMDq、SR-IOV	Yes
IPsec	Yes
Network Virtualization	VXLAN、geneve、NVGRE

Environment Features

Operating Temperature	0 °C to 55 °C (-13 °F to 158 °F)
Storage Temperature	-40 °C to 70 °C (-40 °F to 158 °F)
Storage Humidity	Maximum: 90% non-condensing relative humidity at 35 °C

Physical Features

Size(mm)	110*68**
Weight(g)	*

LED Indicators

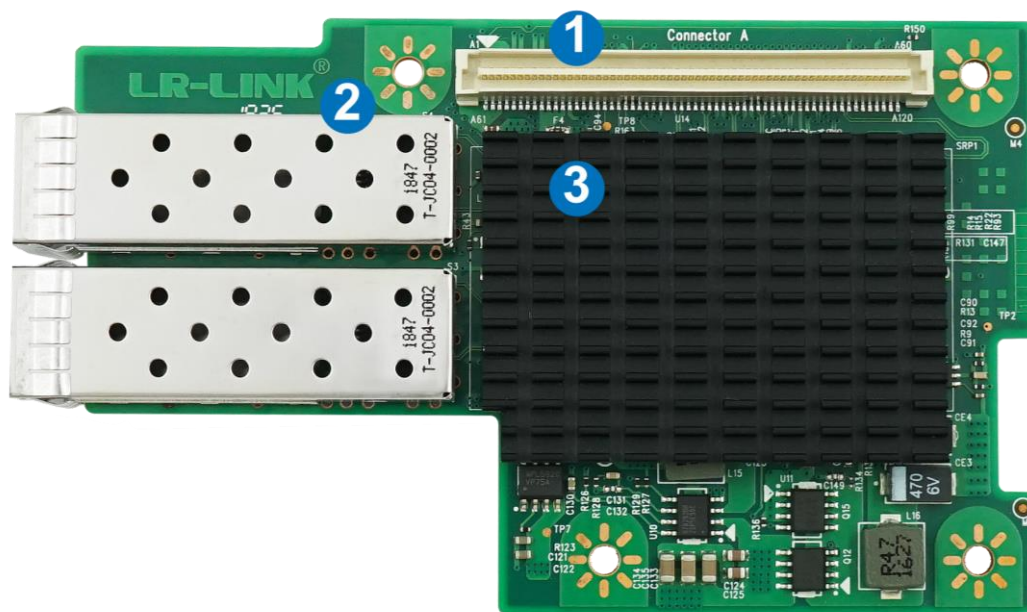
LED Indicators	Yellow Link + Green Blink
----------------	---------------------------

Order Information

P/N	Description
LRES3001PF-OCP	OCP Type-1 Dual-Port 10G SFP+ Ethernet Server Adapter (Net-swift SP1000A Based)

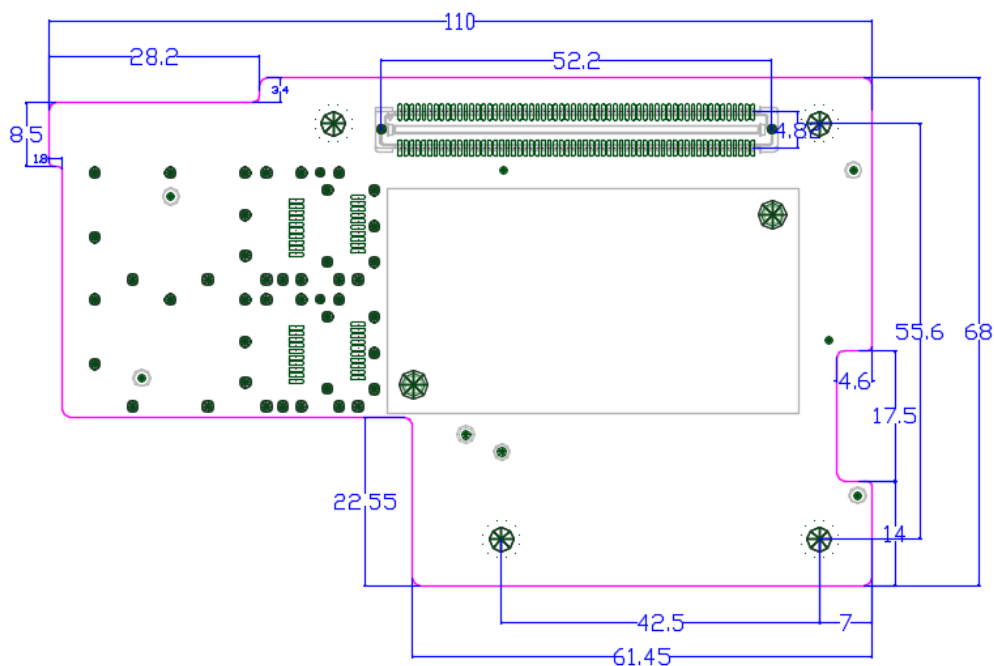
PS: Above details are only for reference, if there is any change, no prior notice.

Product Structure



1. OCP Connector
2. 2*10G SFP+ Connector
3. Heat sink

PS: Above details are only for reference, if there is any change, no prior notice.



PS: Above details are only for reference, if there is any change, no prior notice.

Companion Products

Fiber NIC

- § LR-LINK PCI 100FX Desktop Adapter
- § LR-LINK PCIe 100FX Desktop Adapter
- § LR-LINK PCI 1000BASE-SX/LX Desktop Adapter
- § LR-LINK PCIe 1000BASE-SX/LX Desktop Adapter
- § LR-LINK PCIe 1000BASE-SX/LX Server Adapter
- § LR-LINK PCIe 10GBASE-SX/LX Server Adapter
- § LR-LINK PCIe 25GBASE-SX/LX Server Adapter
- § LR-LINK PCIe 40GBASE-SX/LX Server Adapter
- § LR-LINK PCIe 100GBASE-SX/LX Server Adapter

Copper NIC

- § LR-LINK PCI 10/100Mbps Desktop Adapter
- § LR-LINK PCIe 10/100Mbps Desktop Adapter
- § LR-LINK PCI 10/100/1000Mbps Desktop Adapter
- § LR-LINK PCIe 10/100/1000Mbps Desktop Adapter
- § LR-LINK PCIe 10/100/1000Mbps Server Adapter
- § LR-LINK PCIe 100/1G/10Gbps Server Adapter
- § LR-LINK PCIe 1G/2.5G/5G/10Gbps Server Adapter

Download Drivers

To get the drivers, please visit us at <http://www.lr-link.com/support/driver.html>.

Product Quick Guide

To know the network card basic knowledge to choose the suitable NIC you need, please visit us at: <http://www.lr-link.com/productchoose.html>.

Customer Support

LR-LINK customer Support Services offers a broad selection of programs including phone support and warranty service. For more information, contact us at Service and availability. <http://www.lr-link.com/contactus.html>

Shenzhen Lianrui Electronic Co.,LTD.

Shenzhen Lianrui Electronics Co.,Ltd is an efficient Ethernet adapter design company with independent research and development,using Intel,Net-swift,Tehuite,Broadcom,Realtek and other manufacturers Ethernet controller, developed by our company's independent R & D design team,manufacturedby our company workshop, and then sell.

Declaration

Our products specifications come from modifying the chip manufacturer's specifications released. Product features, technical parameters, technology right, intellectualproperty rights and brand names etc.mentioned in specifications are just referenced only.There is no infringement meaning.If there is any important andsensitive content related, please contact our Lianrui company, we'll delete them, Thank you.

SHENZHEN LIANRUI ELECTRONICS CON.,LTD.

ADD:C4 Bldg.,Xintang Industry Zone,Baishixia FuyongTown,Baoan District Shenzhen China

Tel:+86(0)755-33671531 33671533 Fax:+86(0)755-29082065

Product Sales sales@lr-link.com

Technical Support support@lr-link.com

WEB www.lr-link.com



Copyright © Shenzhen Lianrui Electronics CO.,LTD,2006-2019. All rights reserved